

# PUREAIRO WCD 120C

## APPLICATION

The WCD 120C dehumidifier is able to extract 100 L of water at a standard rating condition of 30 °C /80%RH in a space, not more than 307m<sup>2</sup>.

This unit will only use up 6.2 Amps / 220 V while controlling the humidity levels. It is built with high capacity, high energy use efficiency and is environmentally friendly.

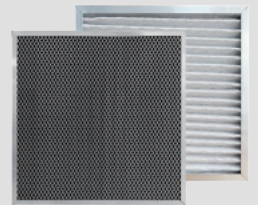
The WCD 120C dehumidifier is built for use in a mid-size commercial set up, however since it is built small and compact, this unit can be easily moved into any space that requires dehumidification using already fitted heavy duty carrier handles.

This design also allows the unit to easily hang overhead.

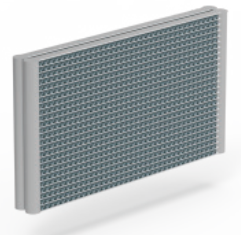
The WCD 120C dehumidifier is one of most purchased commercial space dehumidifiers for its quiet operation abilities. This unit will produce sounds below 60DBA, hence your workplace will remain comfortable for you, your employees and most importantly your customers.



Condensate Pump



MERV-1 filter  
MERV-10 filter

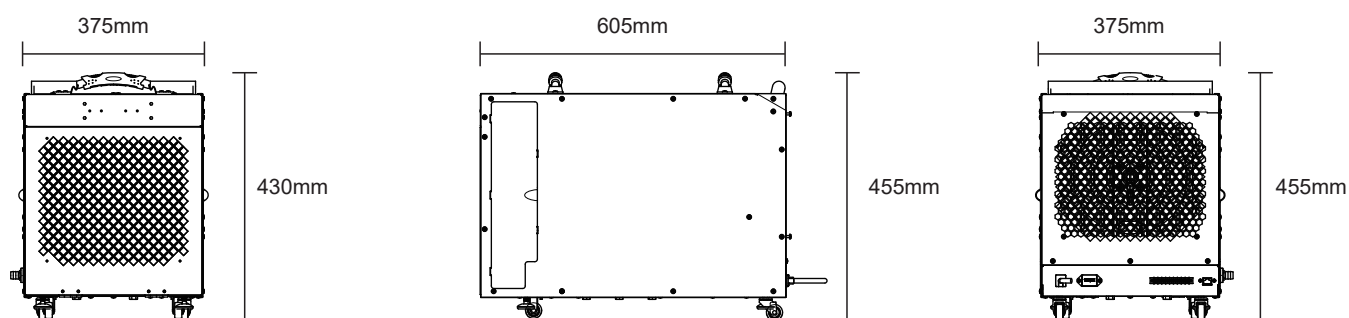


Microchannel coldan  
heat exchanger



## SPECIFICATIONS

Power	6.2A, 220V / 50Hz
Approved for commercial use	Yes
Size limit	Not over 3,300 sq. ft
Air flow	290 CFM, 500CMH
Installation type	Portable
Remote control	Yes
Display type	Digital.
Sound level	60 DBA
Draining	Condensate pump
Compressor type	Rotary
Defrosting control system	Auto Defrosting
Bypass air sensor	Yes.
Memory starting	All set settings remain the same even after a restart
Automatic humidistat control	Yes.
Easy handling	Plug and play design-easy to operate
Weight	40 Kg
Dimensions	605 x 375 x 455 mm



## PERFORMANCE

**Air filtration** - The WCD 120C dehumidifier is fitted with MERV- 8 filters that are able to trap even the smallest mold spores, dust particles and any other allergens in the air. The WCD 120C dehumidifier will improve the quality of your indoor air hence reducing the number of respiratory problems and allergies in your employees.

**Note:** to achieve the desired dehumidification results with The WCD 120C dehumidifier, space must be free of water intrusion or excessive fresh outdoor air infiltration. All water intrusion and air infiltration problems should be fixed before installation.



## FEATURES

CETL	✓
Compressor Type Rotary	✓
More Thorough, And More Quick	✓
Ducting options	✓
Condensate Pump	✓
Easy handling	✓
Water Full protection	✓
Environmental R410A Refrigerant	✓
Automatic humidistat control	✓
Memory Starting	✓
Washable Air Filter	✓
Wheels	✓
Low Temperature	✓
Cable / Hose Wrap	✓
Quick connection to Cable/Hose	✓